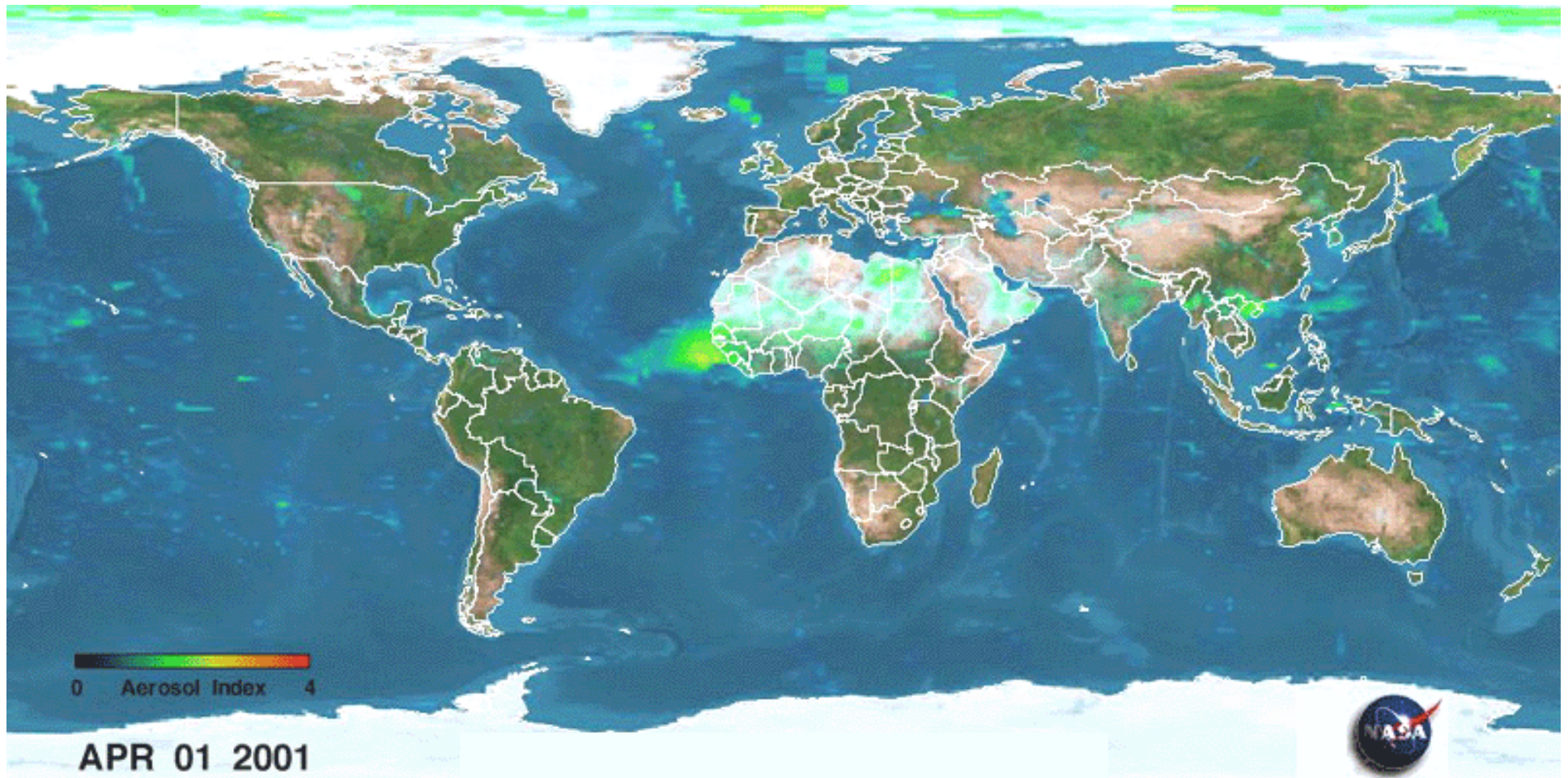


Integrating Satellite Image Data w/ Respiratory Reporting Systems

**Stan Morain, PI
Earth Data Analysis Center, UNM**

**NM Quarterly Epidemiology Meeting
HUD Conference Room, Silver Square
Albuquerque, NM
January 13, 2005**

Temporal Visualization of Aerosols



Asthma: Top Ten Cities for Asthma

- 1) Tucson, AZ
- 2) Kansas City, MO
- 3) Phoenix-Mesa, AZ
- 4) Fresno, CA
- 5) New York, NY
- 6) El Paso, TX
- 7) Albuquerque, NM
- 8) Indianapolis, IN
- 9) Mobile, AL
- 10) Tulsa, OK

Reported Predictors & Triggers of Asthma

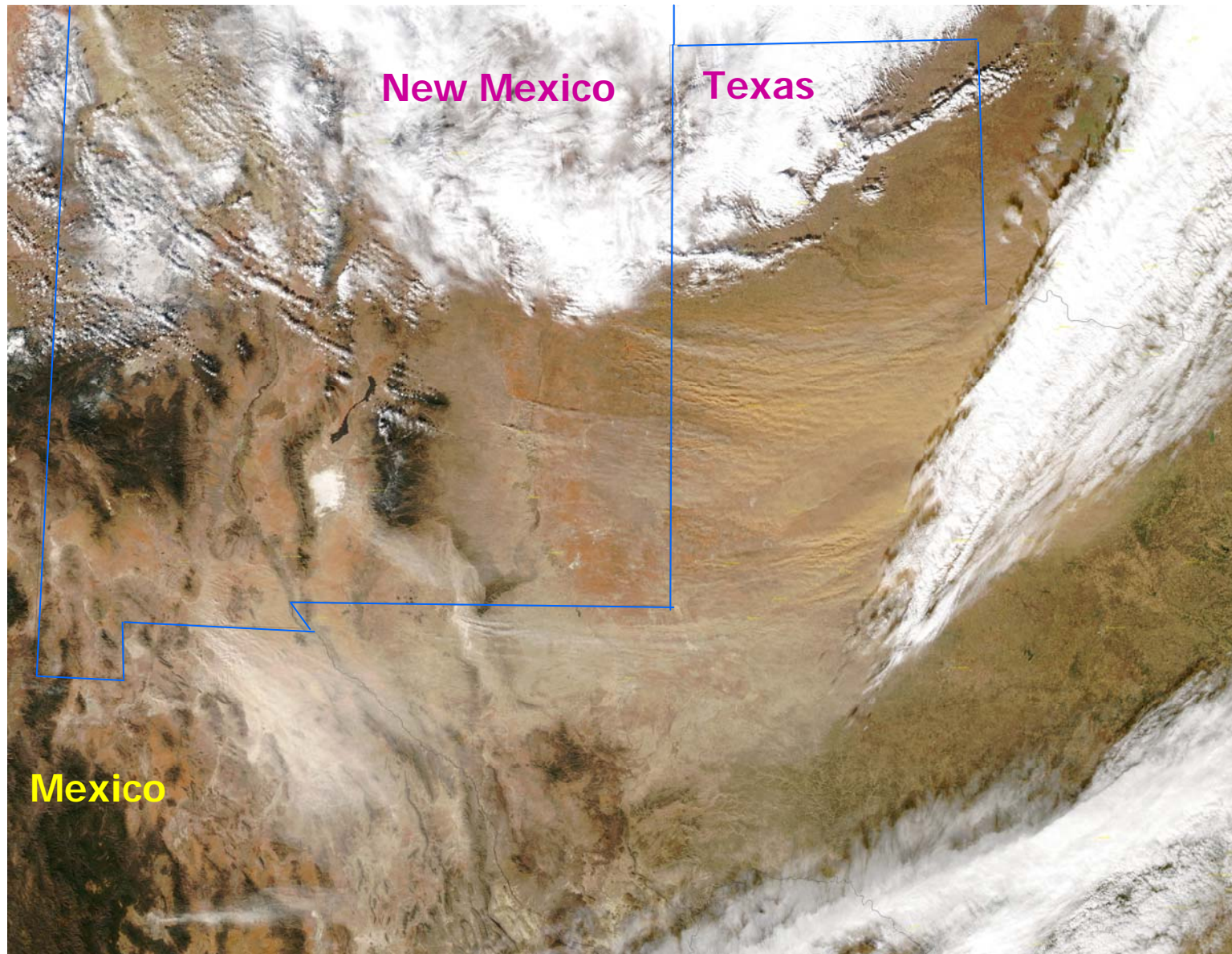
Respiratory Predictors

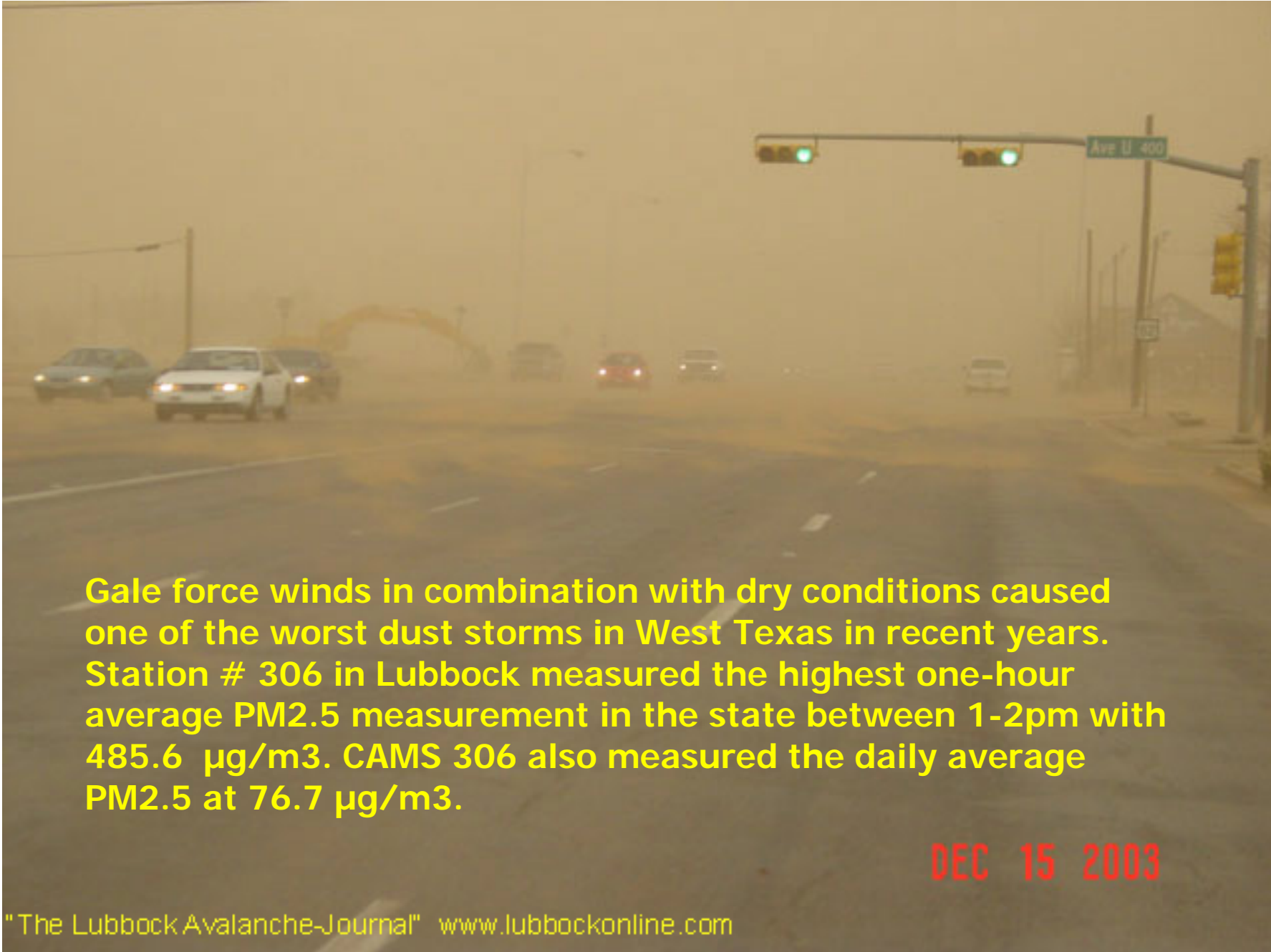
1. Urbanicity
2. Traffic density
3. Age
4. Gender
5. Temperature
6. Precipitation
7. Humidity
8. Others ?

Respiratory Triggers

- A. Outdoor Environment
 1. Dust/Smoke
 2. Pollen
 3. Ozone
- B. Indoor Environment
 1. Wall-to-wall carpet
 2. Cockroaches
 3. Stuffed toys

New Mexico/Texas Dust Storm

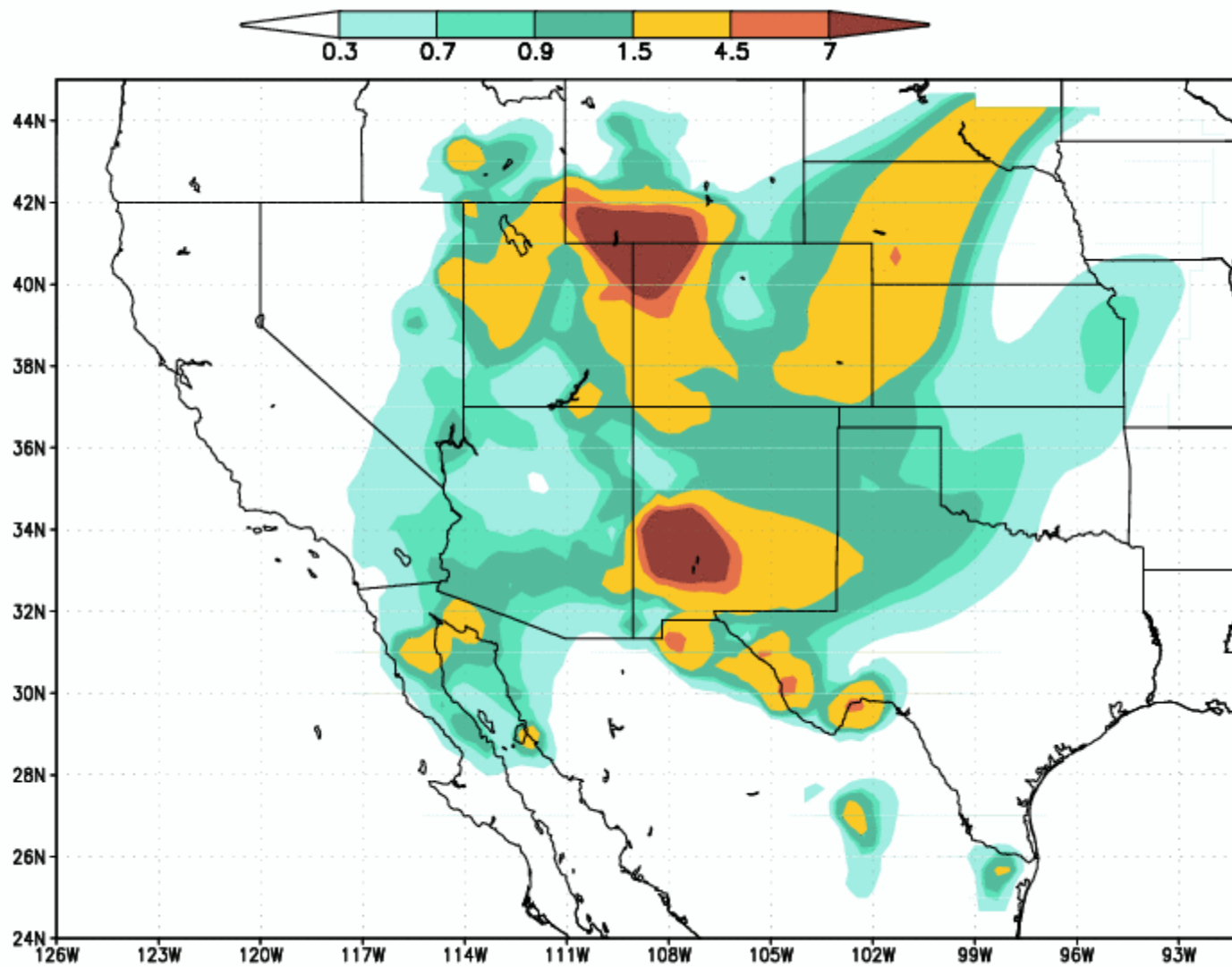


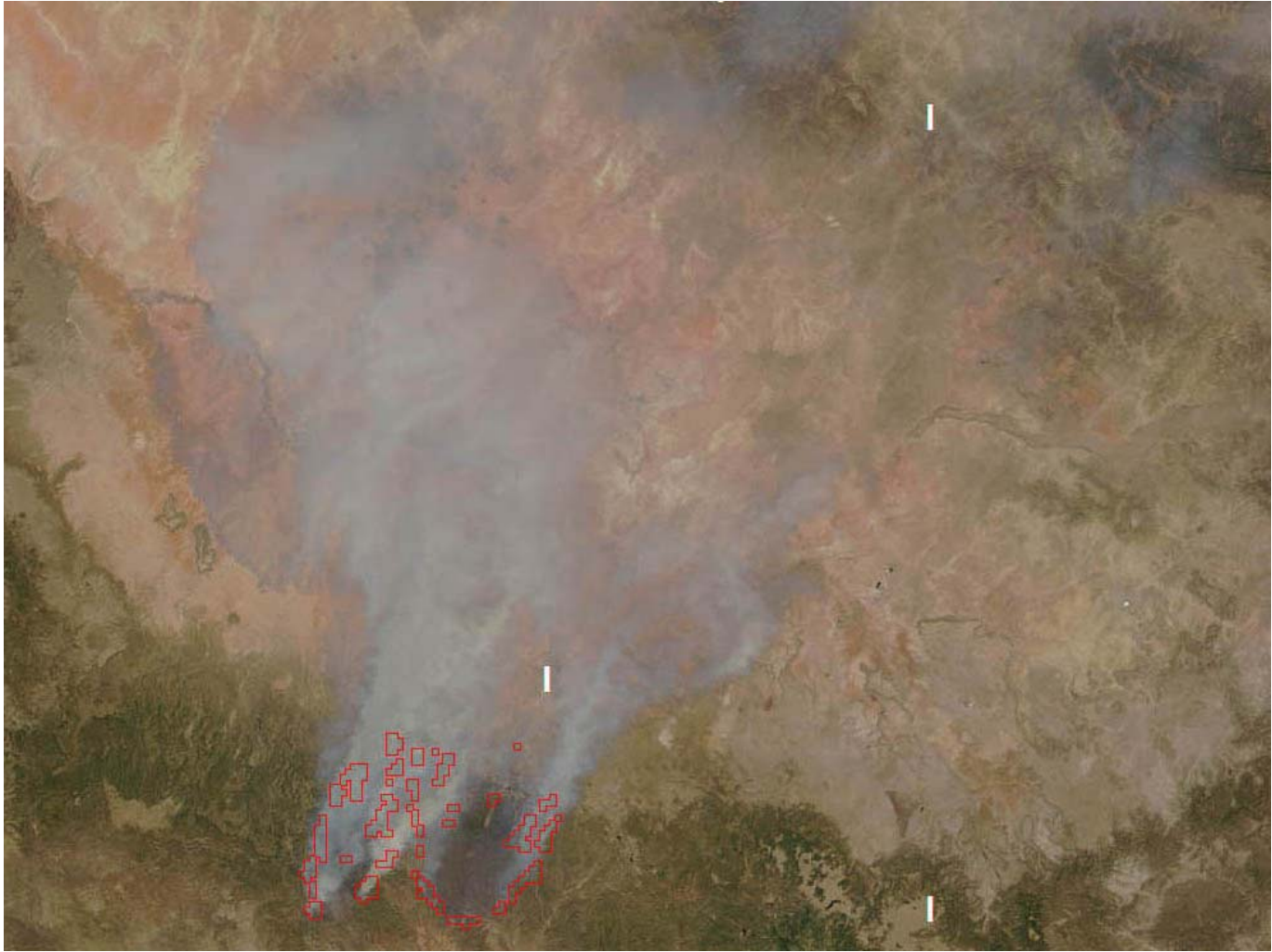


Gale force winds in combination with dry conditions caused one of the worst dust storms in West Texas in recent years. Station # 306 in Lubbock measured the highest one-hour average PM2.5 measurement in the state between 1-2pm with 485.6 $\mu\text{g}/\text{m}^3$. CAMS 306 also measured the daily average PM2.5 at 76.7 $\mu\text{g}/\text{m}^3$.

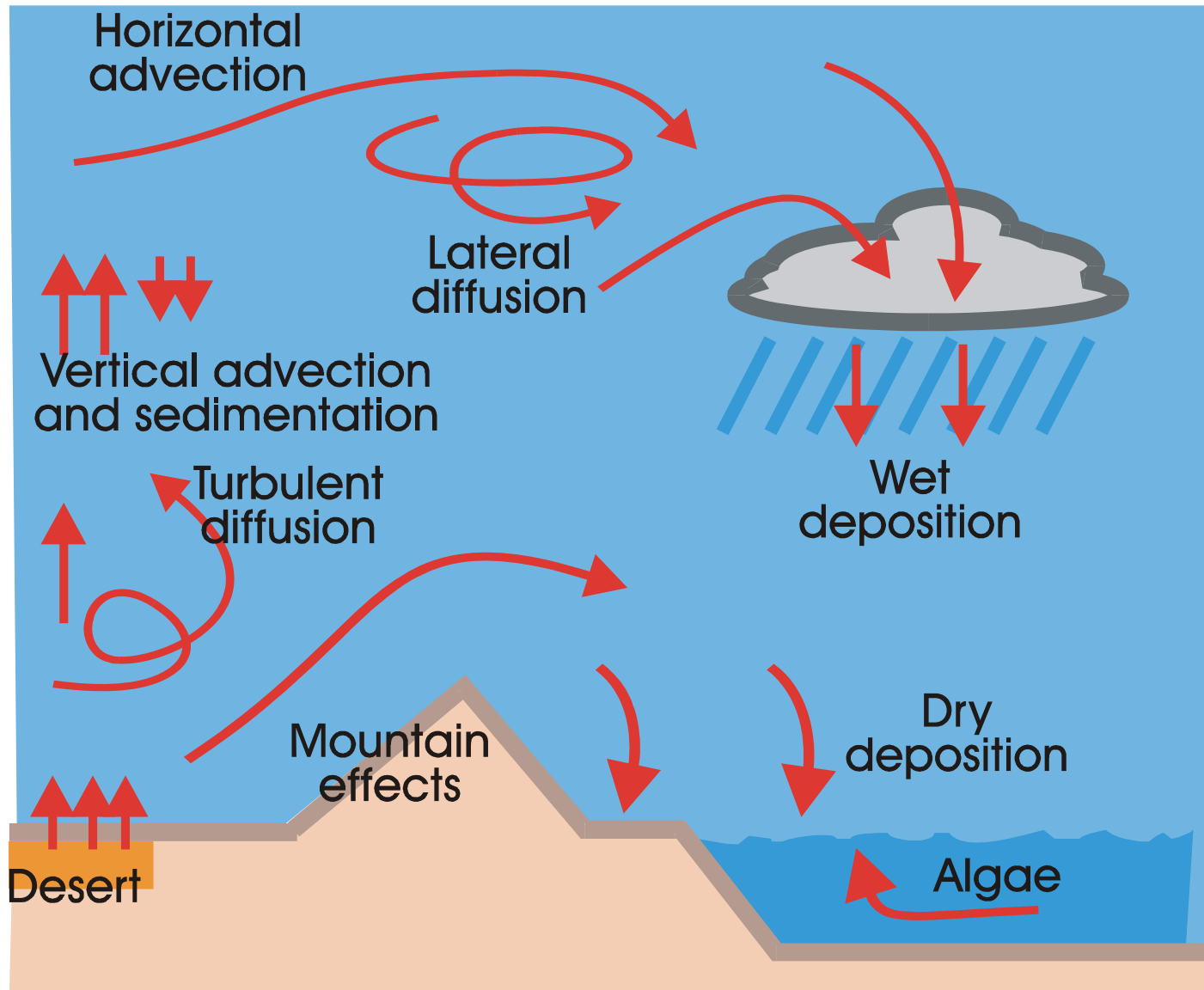
DEC 15 2003







Governing Concept for DREAM



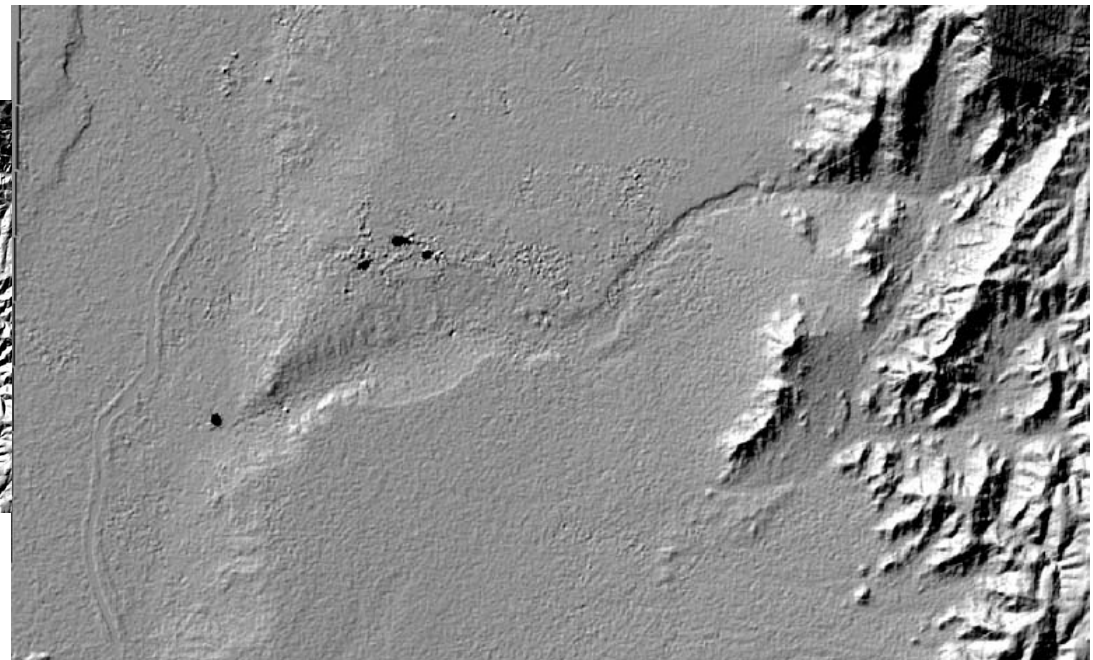
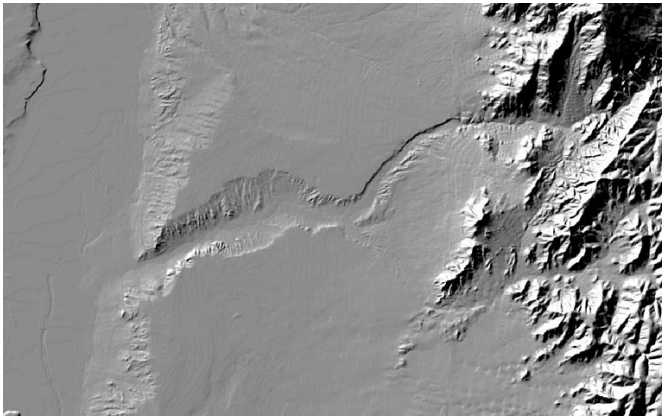
DREAM Inputs & Upgrade Potential

Static Inputs	Dynamic/Variable Inputs	Assimilation Potential
Global topography (1x1 km)	Latitude/longitude, thinned grid standard	ASTER-AST 14/SRTM Digital elevation
Global soil types FAO 2x2 minute (converted into texture classes)	10 pressure levels	NRCS: SSURGO and STATSGO
Global vegetation types USGS (1x1 km)	Geo-potential height	MOD 15 vegetation LAI, FPAR (1km)
Items in blue are NASA-generated products. Idea is to migrate from static to dynamic inputs	Wind components	Addressed by NCEP/Eta
	Specific humidity	AIRS/AMSU-A atmospheric humidity
	Surface fields (soil temp, moisture, and albedo)	MOD 11 soil temp TRMM 3A-53 5-day rain map (2 x 2 km)

Surface Roughness

Shuttle Radar Terrain Mission Data

National Elevation Data



(Experimental)

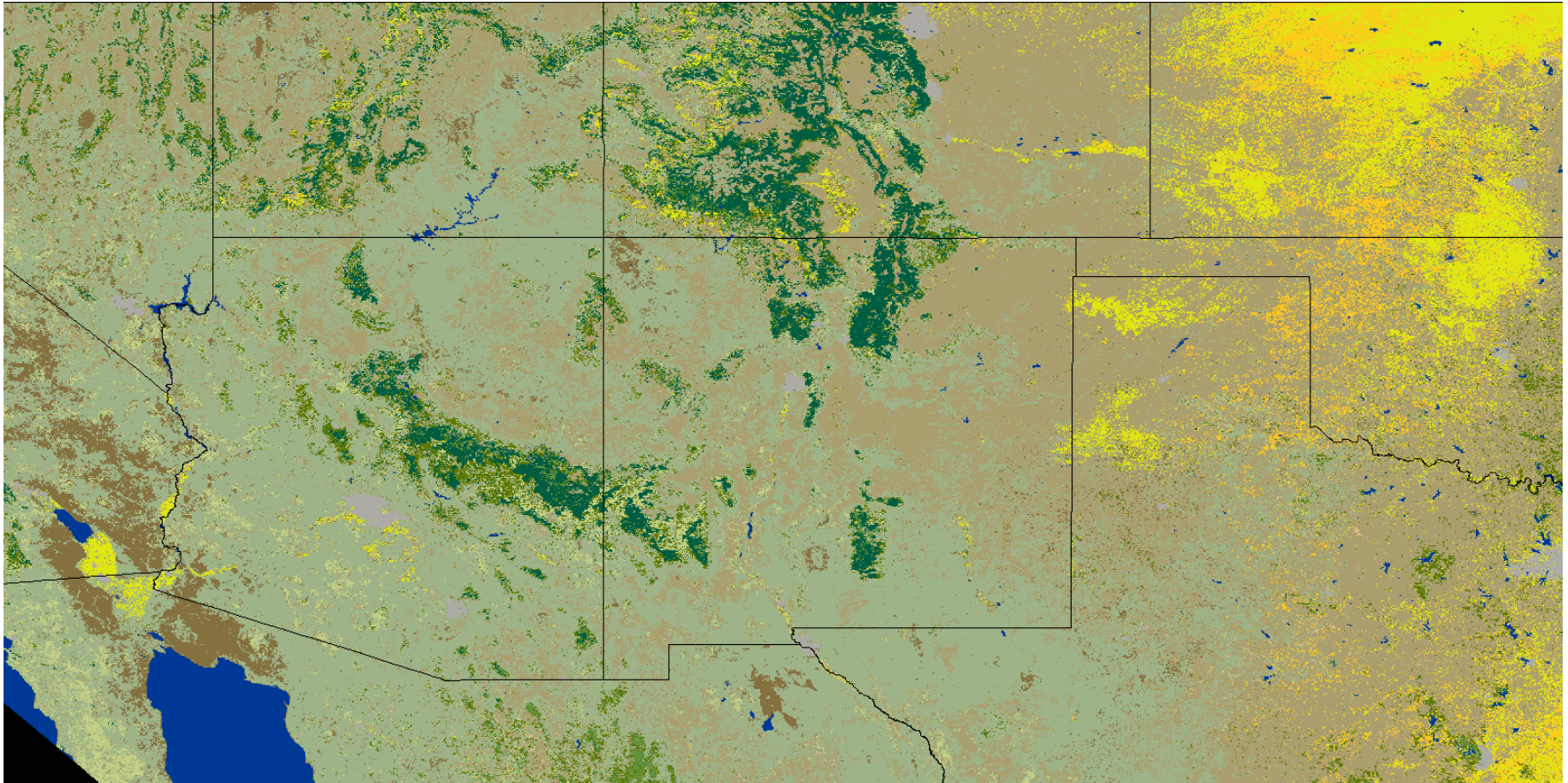
Surface Soil Textures in the SW



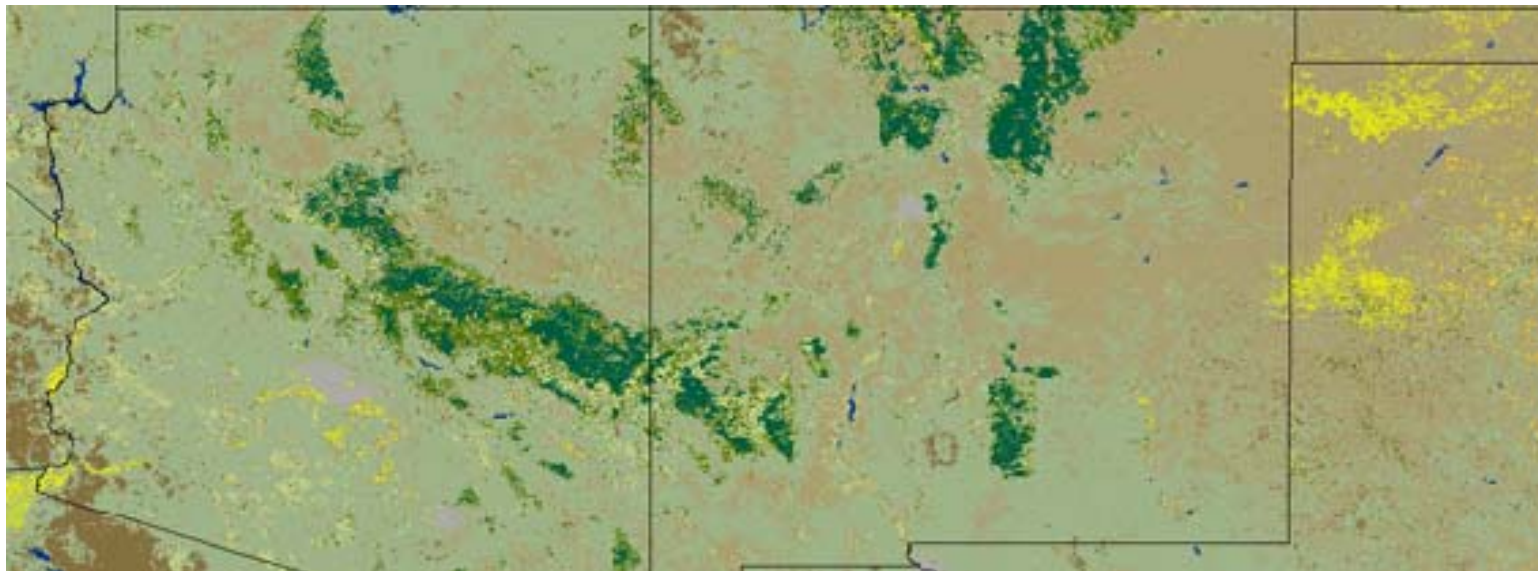
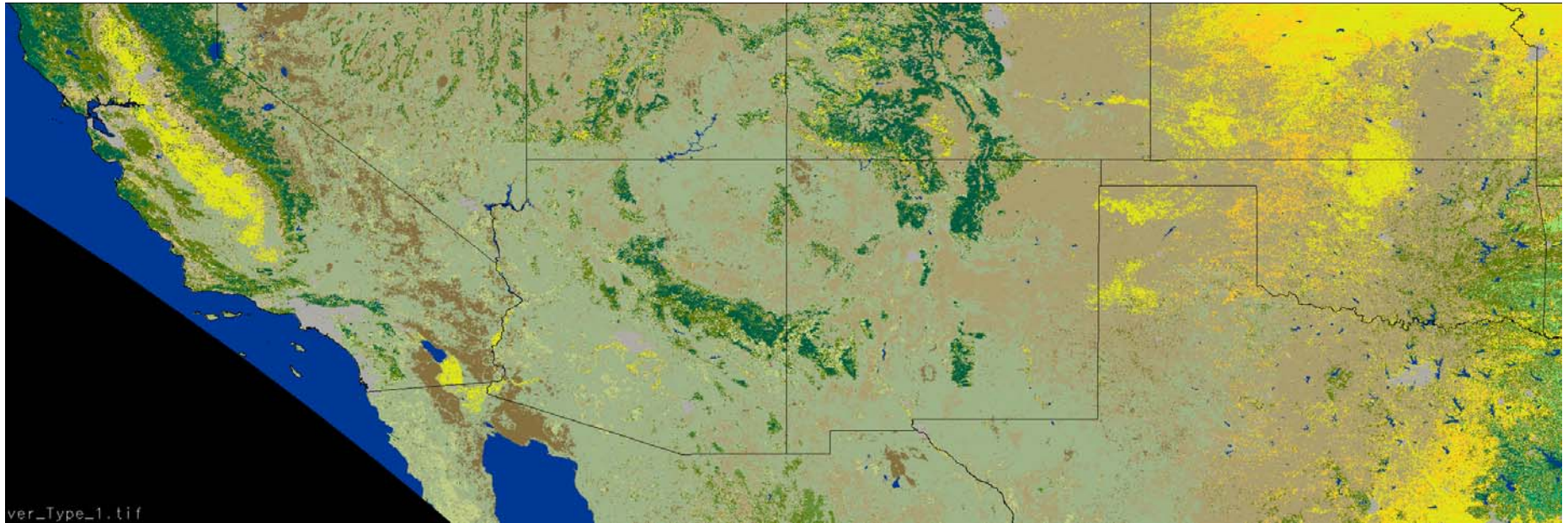
Wind Erodibility Groups in the SW



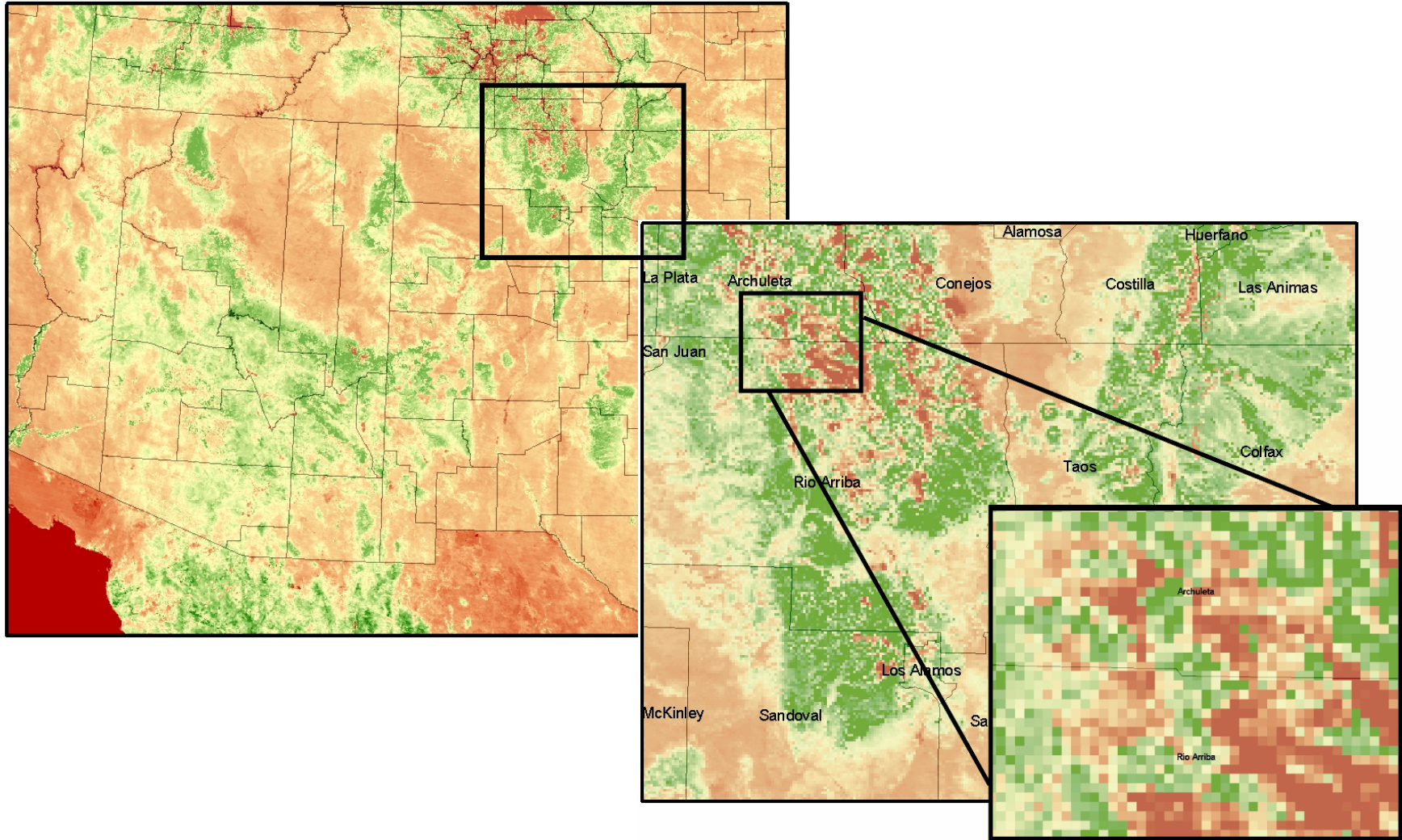
MOD12Q1—(Version 004) Land Cover Type for 2001



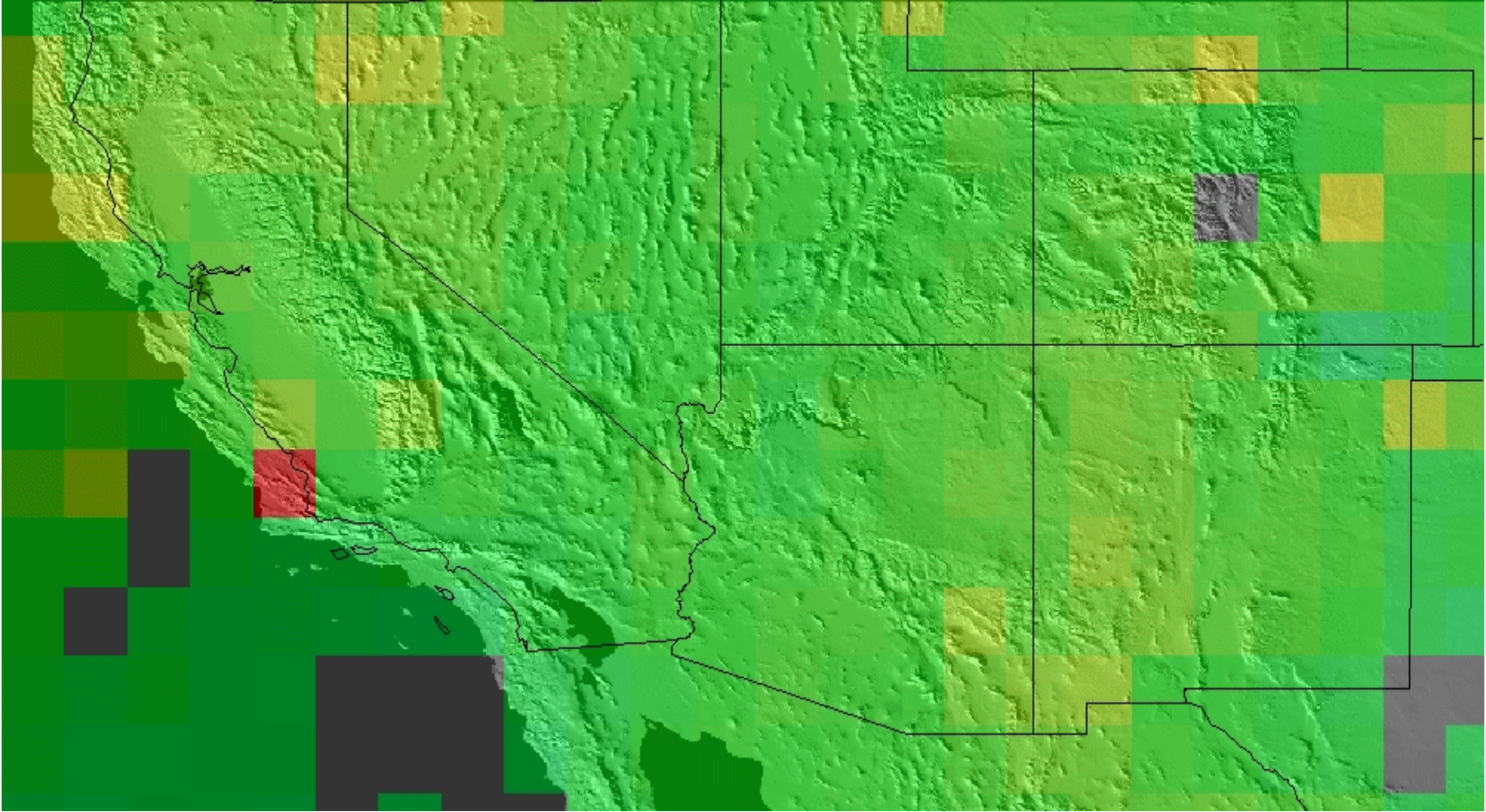
MOD12Q1—(Version 004) Land Cover Type for 2001



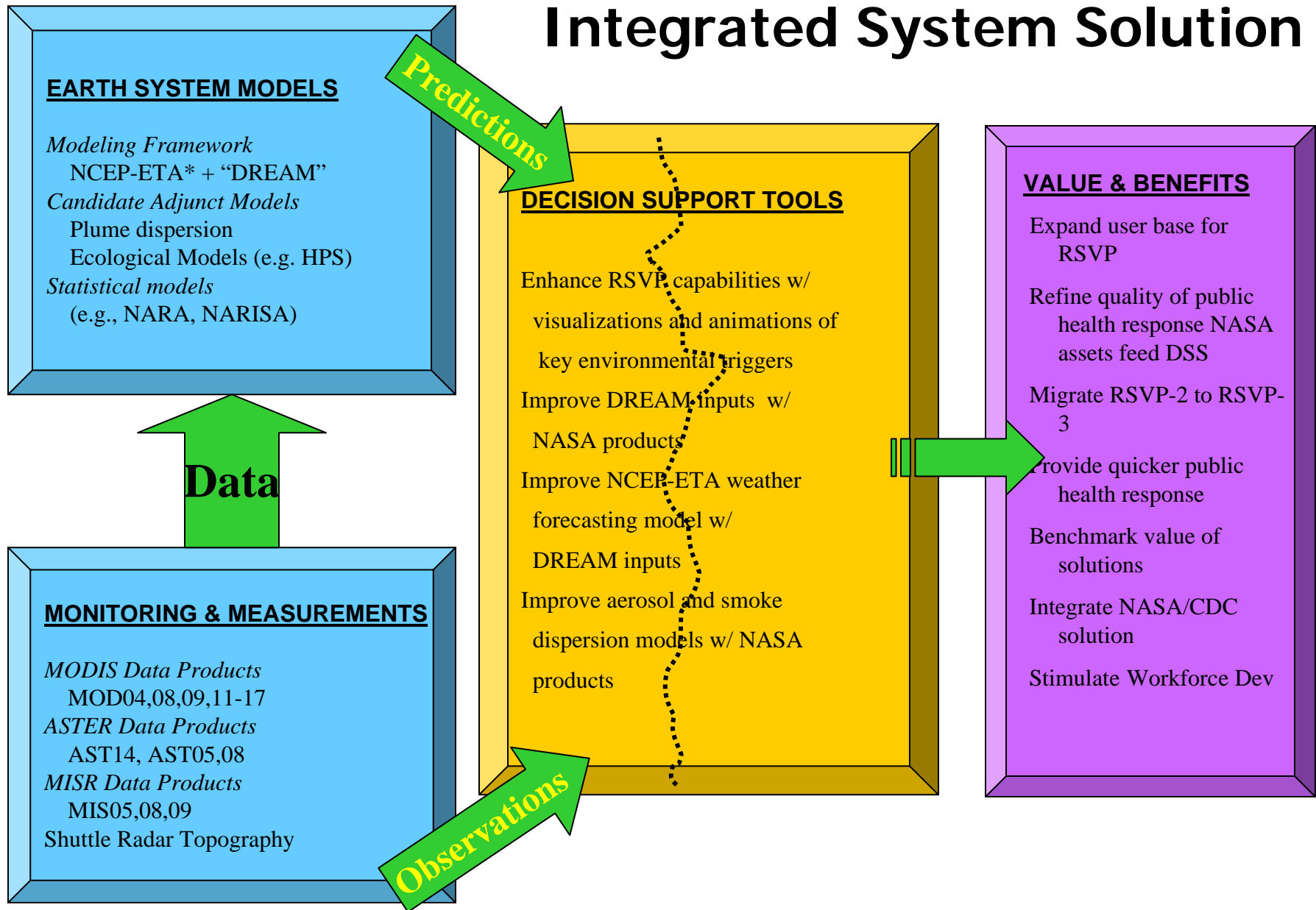
AZ/NM (MOD13A4) 16-Day Vegetation Index 1-km



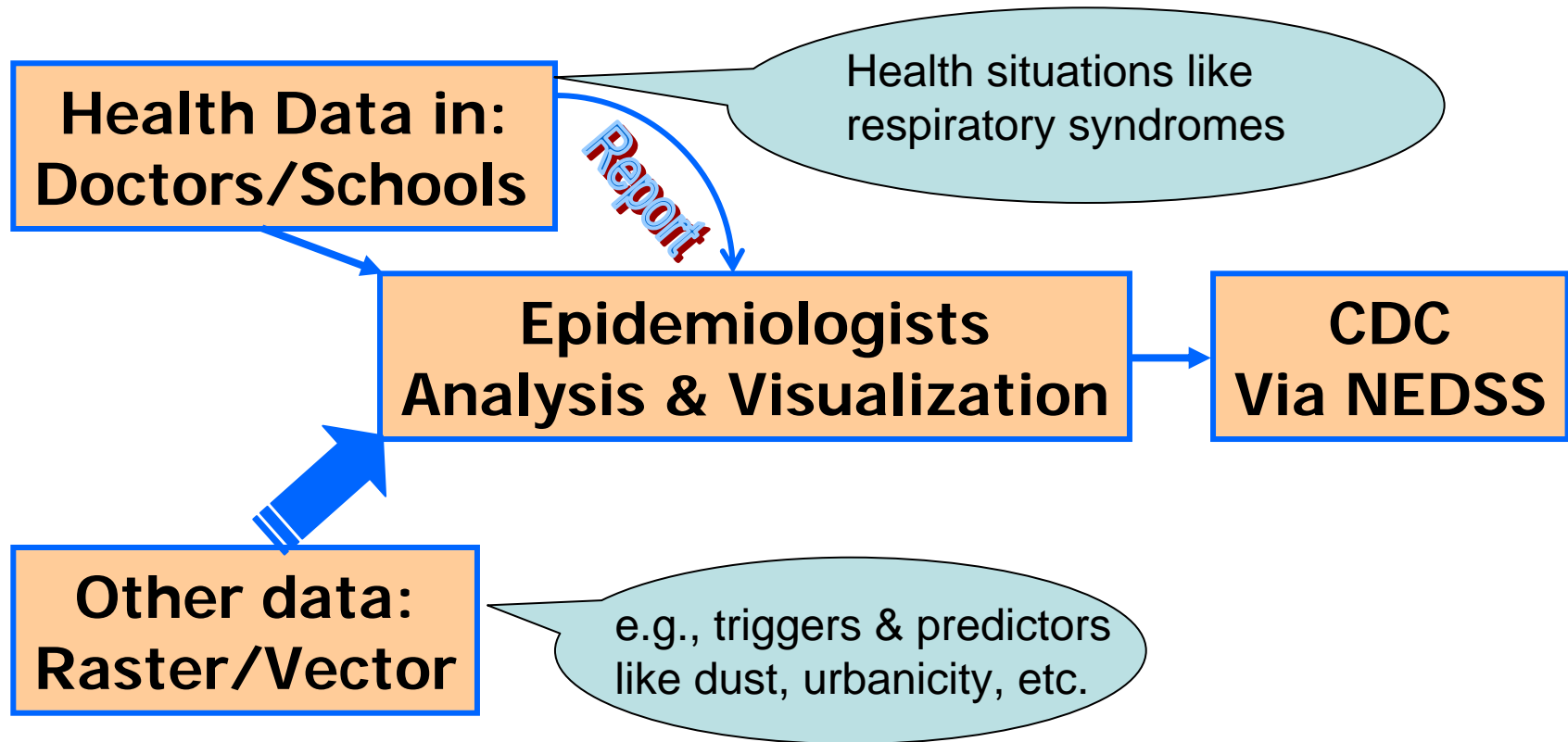
Migrating Ozone Concentrations



Integrated System Solution



Data Assimilation Concept



Project Participants

<u>UNM</u>	<u>U of A</u>		<u>SNL</u>	<u>Stakeholders</u>
	<u>Atmos. Sci.</u>	<u>Opt. Sci. Ctr.</u>		
Stan Morain	Bill Sprigg	Kurt Thome	Susan Caskey	NM/AZ-DOH
Amy Budge	Brian Barbaris	Chris Catrall		NM/AZ-DEQ
Karl Benedict	Dazhong Yin			Hospitals
Bill Hudspeth	Beena Chandy			Private Firms
Tom Budge	Slobodan Nickovic			Health Sci Ctr, TxTech
Chandra Bales				
Gary Sanchez				