



Public Health Applications in Remote Sensing

Using Satellite Data to Improve Dust Storm Forecasts

Dust storms can affect people's health, especially the elderly, the young, and those with breathing problems.

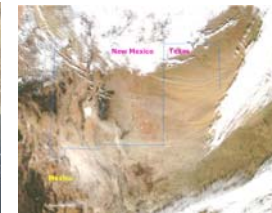


These storms can be seen from satellite images for anywhere on Earth.

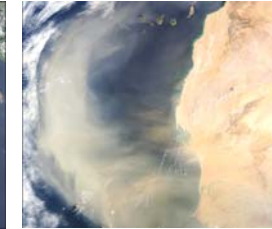
Gulf of Oman



NM - Texas



N. Africa - Italy



West Africa

Satellites also provide data that help scientists improve dust storm forecasts.



Land Cover



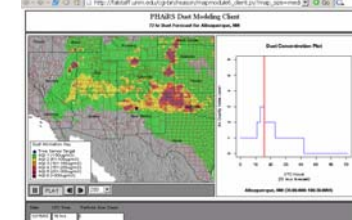
Surface Roughness



Elevation

These data are inserted into a dust forecast model to produce information important to public health officials.

This information is used in a web mapping tool to help public health officials make decisions for issuing health alerts to the public.



Work performed by Earth Data Analysis Center, University of New Mexico and Department of Atmospheric Sciences, University of Arizona. Project funded by NASA.

